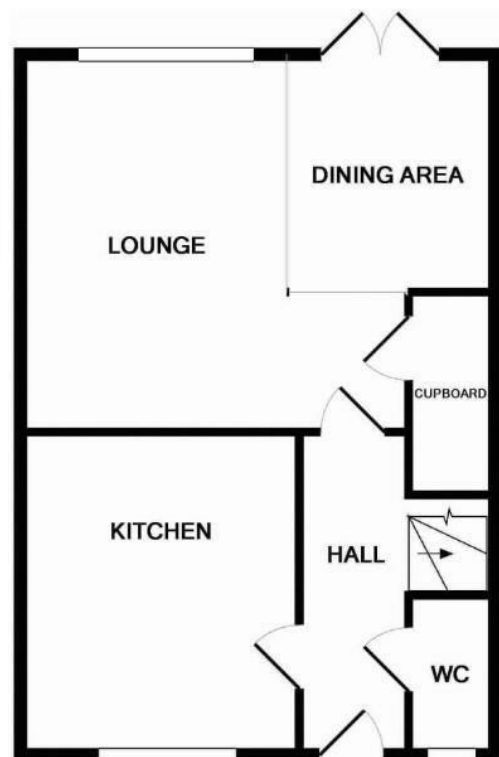




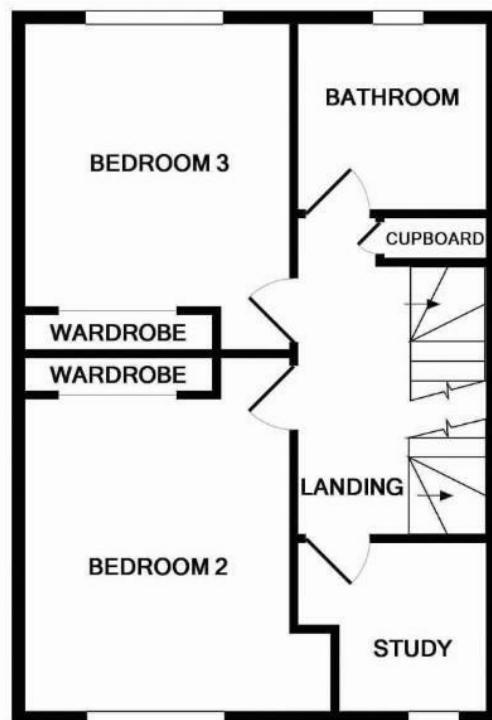
Aldermann McGee Gardens | Great Yarmouth | NR30
 £240,000

abbotFox

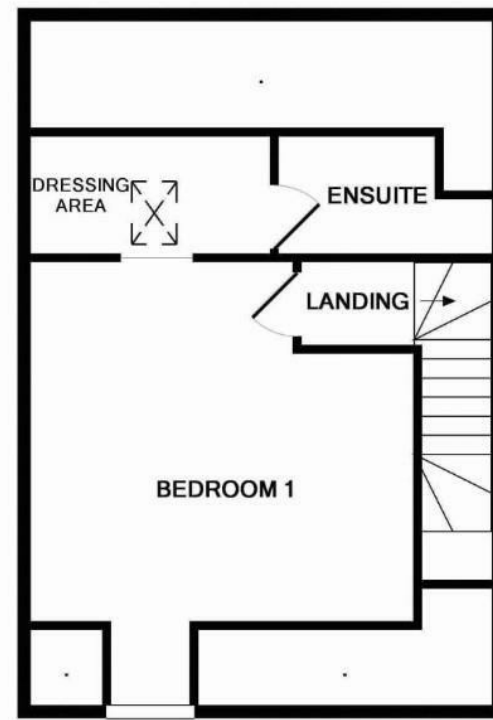
Energy Efficiency Rating		
	Current	Potential
<i>Very energy efficient - lower running costs</i>		
(92 plus) A		
(81-91) B		
(69-80) C		
(55-68) D		
(39-54) E		
(21-38) F		
(1-20) G		
<i>Not energy efficient - higher running costs</i>		
England & Wales	EU Directive 2002/91/EC	



GROUND FLOOR



1ST FLOOR



2ND FLOOR

Disclaimer – In accordance with the Property Misdescriptions Act, the company gives notice that all descriptions, references to condition, necessary permissions for use and other details are given in good faith and believed to be correct, but any intending lessees do not rely on them as statements of fact, but must satisfy themselves by inspection or other means, as to their accuracy.

The logo for AbbotFox, featuring the word "abbot" in a dark blue font and "Fox" in a bold, orange font, all contained within a dark blue square.

abbotFox Land & New Homes presents this brand new, mid terraced townhouse. Situated in the vibrant coastal Town of Great Yarmouth, this home represents a fantastic opportunity for any growing family with a flexible layout and stylish finish throughout.

The ground floor comprises; an inviting entrance hall, WC, modern kitchen and generous lounge diner, that opens onto the enclosed rear gardens. The first floor offers two generous double bedrooms, family bathroom and study/4th bedroom, with the top floor offering a stunning master suite, offering a dressing area and en-suite shower room. Externally, the property allows for a private enclosed rear garden, and parking for two vehicles.

An internal viewing comes highly recommended.